



Joint Action
Antimicrobial Resistance and
Healthcare-Associated Infections



Co-funded by the
Health Programme
of the European Union

Implementing guidelines preventing CAUTI using the Breakthrough Series Model

Lotta Edman, Public Health Agency of Sweden



Folkhälsomyndigheten
PUBLIC HEALTH AGENCY OF SWEDEN



Background



WP6.2



Implementation



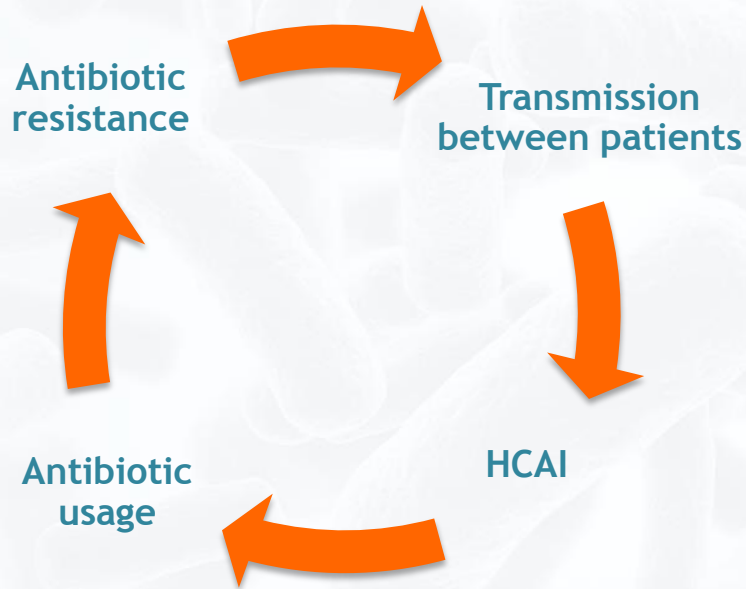
The Breakthrough Series Model



Summary

Background

Viscous circle of HCAI - AMR relation



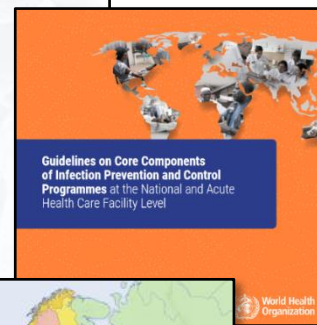
Infection Prevention and Control is a tool to reduce the spread of AMR

Objective

Promoting a bottom-up approach from clinical practice to policy level by implementing evidencebased guidelines using an established implementation model

Participating countries

Belgium, Czech Republic, Estonia, Latvia, Lithuania, Netherlands, Slovenia, Sweden
Georgia, Moldova, Ukraine



Why CAUTI?



- Frequently reported globally
- Indwelling catheters common
- Found in different kinds of healthcare
- Principles similar to other device associated infections

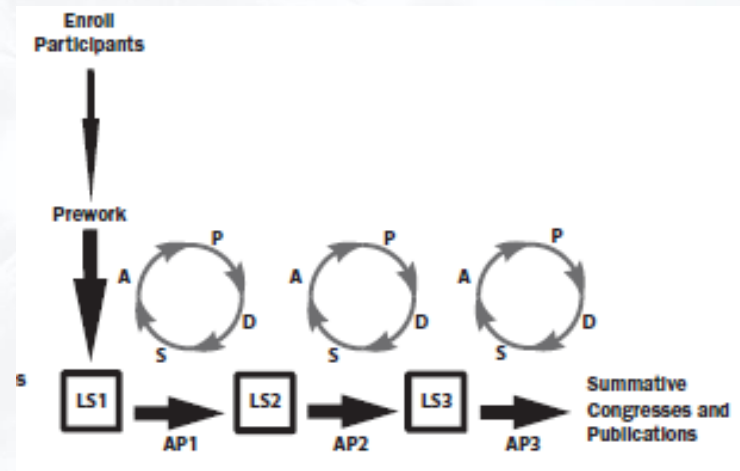
Implementation

- There needs to be a need
- Systematic work
- Structures
- There are no simple solutions



Breakthrough Series Model

- Prework
- Workshops combined with action periods
- Testing changes
- Bottom-up approach



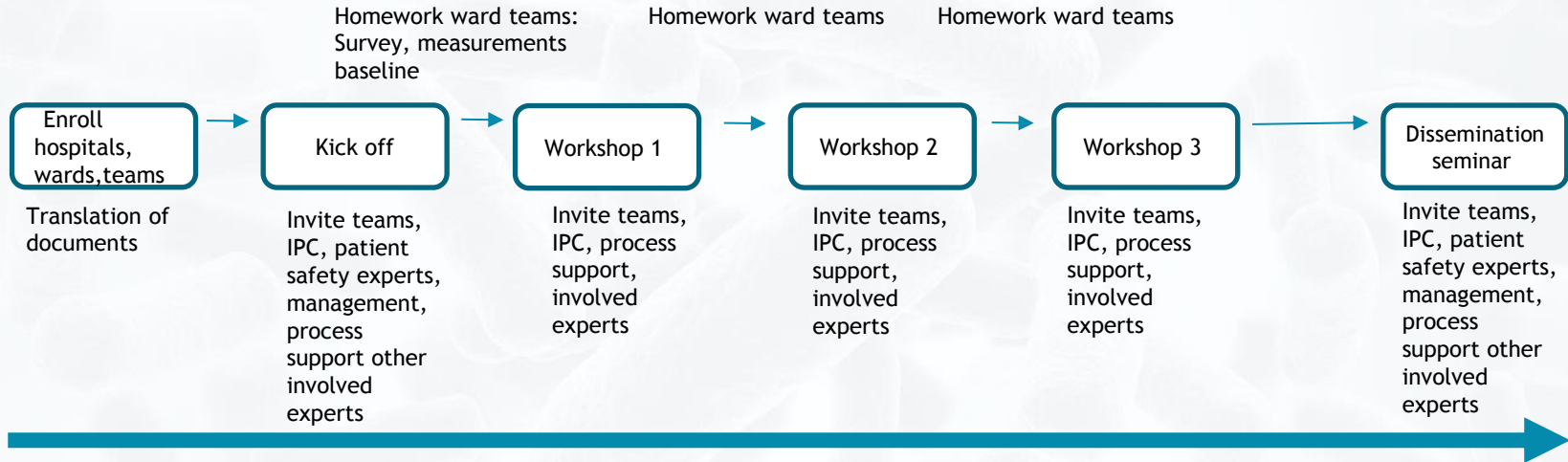
Bundle

- Avoid unnecessary catheters
- Closed collection system
- As small size as possible
- Insertion - aseptic technique
- Maintenance - aseptic technique
- Review daily and remove if not indicated

WP6.2 UNIT/WARD SURVEY 2018		Purpose of the survey: Review the routines at			
Closed collection system					
Catheter bag with a port to allow emptying and a sampling port is used					
Connection between catheter and bag is disconnected					
Catheter size and material					
Catheter as small size as possible is used					
Antimicrobial material is avoided					
Insertion using aseptic technique					
	Yes	No			
Detailed instruction for catheter insertion					
	Never	Sometimes	Often	Always	
Hand hygiene before and after insertion of the catheter					
Periurethral area cleaned with appropriate antiseptic or sterile solution					
Single-use packet of sterile lubricant jelly					
Insertion using aseptic technique					
Sterile equipment are used during catheterization					
Sterile gloves or no touch technique are used during catheterization					

Work in the units/wards

Support via mail, phone, visits, web meetings



PHASE 1
Prework

PHASE 2
Pilot

PHASE 3
Expansion new wards

Advantages of a Joint Action

Sharing problems - and solutions

More similarities than differences

Bacteria knows no borders

Collaboration on different levels

Increase awareness



Thank you!

Lotta Edman

www.eu-jamrai.eu



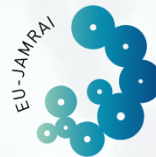
@EUjamrai



EUjamrai



EUjamrai



Joint Action
Antimicrobial Resistance and
Healthcare-Associated Infections



Co-funded by the
Health Programme
of the European Union



Folkhälsomyndigheten
PUBLIC HEALTH AGENCY OF SWEDEN

** This presentation arises from the Joint Action on Antimicrobial Resistance and Healthcare-Associated Infections (EU-JAMRAI), which has received funding from the European Union, under the framework of the Health Program (2014-2020) under the Grant Agreement N° 761296. Sole responsibility lies with the author and the Consumers, Health, Agriculture and Food Executive Agency is not responsible for any use that may be made of the information contained herein.*